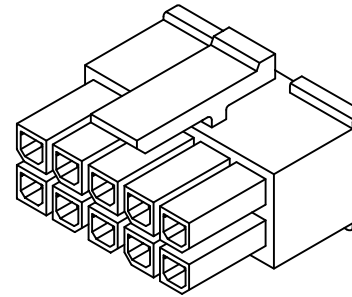
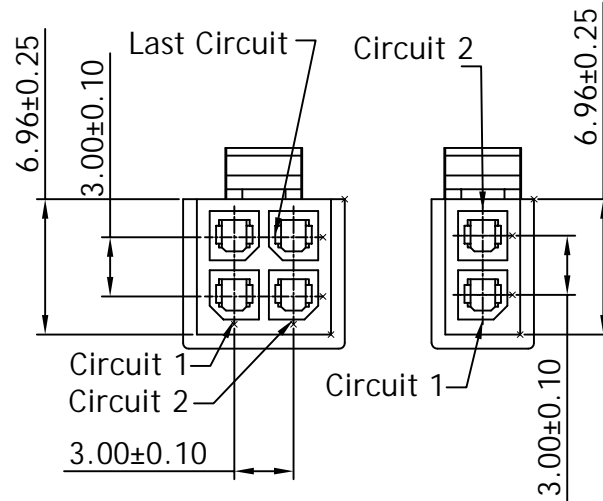
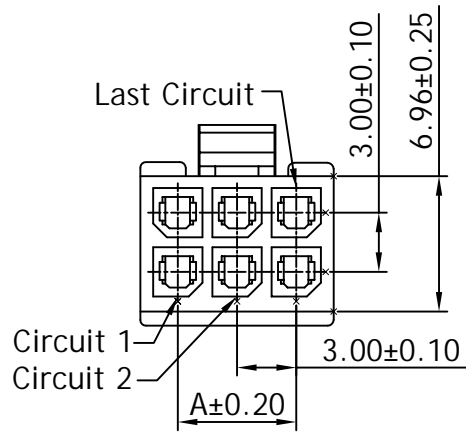


RoHS COMPLIANT

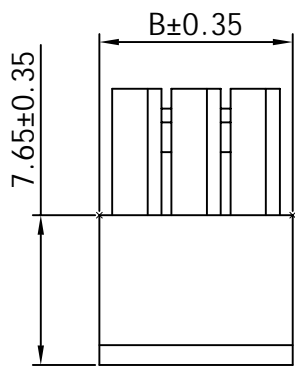
Current rating:5A AC,DC
 Voltage rating:250V AC,DC
 Temperature range:-40°C~+105°C
 Contact resistance:10mΩ Max.
 Insulation resistance:1000MΩ Min.
 Withstanding voltage:1500V AC/minute
 Material:Nylon 66,UL94V-0



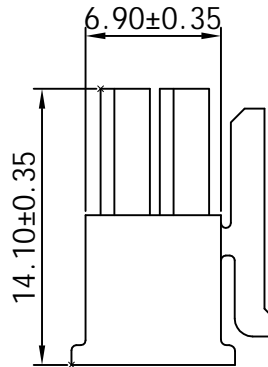
PIN NO.	Dimensions	
	A	B
02	-----	3.85
04	3.00	6.85
06	6.00	9.85
08	9.00	12.85
10	12.00	15.85
12	15.00	18.85
14	18.00	21.85
16	21.00	24.85
18	24.00	27.85
20	27.00	30.85
22	30.00	33.85
24	33.00	36.85

S30002 - RX -XX

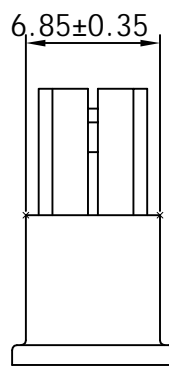
Series No. _____
 Product _____
 R:Receptacle Housing
 Row Type _____
 1 Single Row
 2 Dual Row
 Contact No. _____
 (02-12) Single Row (02-14) Dual Row



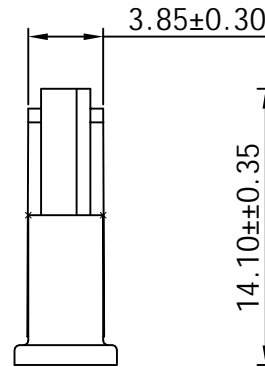
06P-24P



04P



02P



ECN NO.	REV	DATE	DESCRIPTION	CHANGE	APPRO.	GENERAL TOLERANCE UNLESS OTHERWISE NOTED	SCALE: N/A	UNIT:mm	A4	SHEET: 1 of 1
	A-0		NEW			Angle ±2° X.X ±0.35 X.XX ±0.30 X.XXX ±0.20	DESIGN			
							CHECK			
							APPROVAL			

Satron Electronics Ltd.

TITLE: 3.00 PITCH HOUSING

MODEL NO. S30002-RX-XX

THIS DRAWING CONTAINS INFORMATION THAT IS PROPRIETARY TO SATRON ELECTRONICS LTD. AND SHOULD NOT BE USED WITHOUT WRITTEN PERMISSION